

AE108 Series

Performance 11AC

vCPE and Wireless Access Point



Multi-protocol AE108 series deliver gigabit 802.11ac performance combines software-driven multi-mode security, guest access and routing with content awareness. This Unified Access Device (UAD) ensures ease of deployment with as standalone, developer integration, or activeARC CMS intelligent cloud control combined with patent-pending content policy for the most demanding mobility ecosystem.

Key Features

- 2x2 SU-MIMO IEEE802.11ac
- 867Mbps on 5GHz and 300 Mbps on 2.4GHz
- Application and Device aware
- Extended 16 SSIDs per radio (32 total)
- Extended 4,000 VLAN capability
- activeNode feature for vCPE flexibility
- activeControl for policy, access, and security
- Advanced QoS support
- Router, Client, Firewall, and other modes
- 1 RJ-45 and 1 USB Port

Advanced per device software support ensure user performance regardless if you deploy 1 or 1,000 devices. All AE108s deliver Captive Portal support, 4k VLANs, Dual IP Address, IEEE 802.1p VLAN priority, WMM, IEEE 802.11e EDCF, and Service-Aware priority assigned by VSC, support for radius authentication and Layer 2 Isolation.

The **AE108-CMS** is ideal for low or high density environments. The activeARC CMS cloud and UAD operating system is simple to use for the novice IT person while loaded with beyond enterprise features to ensure content control and delivery.

The **AE108** can be used as a standalone device, integrated into management systems or provide capable integrators with open source access to deploy their own Wireless as a Service platforms including Location Service and Monetization among others services.

Unified Access Devices are designed to deliver a flexible platform for IP networks ranging from small hotspots to highly complex growth networks. UADs ensure simple connectivity and provisioning, identification of content, content control to ensure delivery for an enhanced user experience even while the network becomes more saturated.

Policy-based and software-driven features allow for specific Quality-of-Service streams that ensure voice, video, and data services based on client or provider requirements. Combined with basic Firewall setting, these devices enable users to start deploying true all-wireless network environments at superior value.

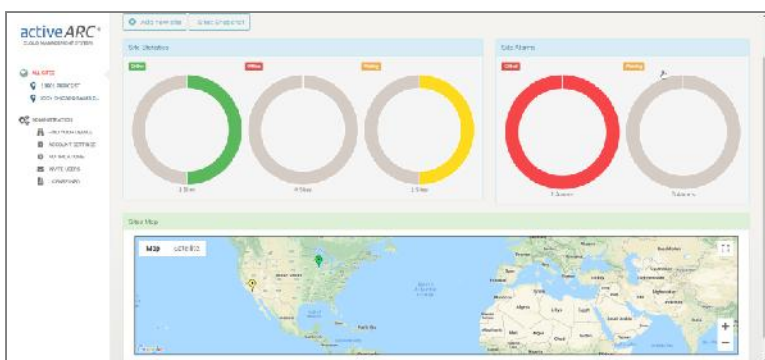
Designed for use by small and medium IT professional as well as the most demanding service provider, the AE108 device intelligence goes beyond standard wireless devices. A more intelligent edge gives the user better control to deploy applications, enhance security and provide better user experience.

Unified Access Device

A new class of wireless mobility devices

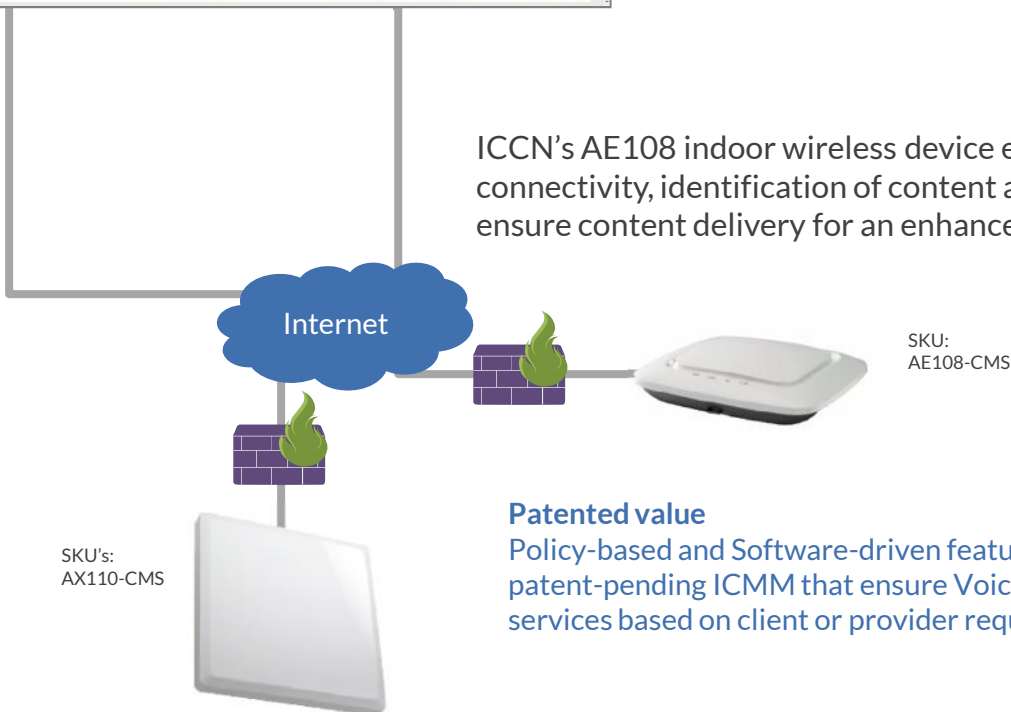
activeARC[®]
CLOUD MANAGEMENT SYSTEM

Intelligent enterprise wireless edge to ensure simple content control and delivery



The activeARC CMS cloud system is designed for intelligent yet simple and cost-effective deployment of the ICMM smart wireless products. Deploy 1, 1,000 or 10,000 units of this robust ecosystem to ensure visibility, management and control.

ICCN's AE108 indoor wireless device ensure 11ac connectivity, identification of content and content control to ensure content delivery for an enhanced user experience.



SKU's:
AX110-CMS

SKU:
AE108-CMS

Patented value

Policy-based and Software-driven features begin with ICCN's patent-pending ICMM that ensure Voice, Video, and Data services based on client or provider requirements.

ICCN's AX110-CMS series outdoor devices give service provider flexibility, SNMP or Cloud management with routing, security and firewall capabilities that compliment central management control.

Smart value

These Unified Access Devices leverage software to drive flexibility while reducing mobile edge cost in a time of growing Internet of Things. Handling more devices with greater network control will drive client adoption.

AE108 Wireless Unified Access Device

FEATURES

RADIO

Dual Band Radio
2X2 MIMO
IEEE 802.11n
IEEE 802.11ac

Meets international Wi-Fi Standards and supports the most modern Wi-Fi specifications.

2.4GHz IEEE 802.11 b/g/n
5GHz IEEE 802.11 a/n/ac

Supported 2.4GHz Wi-Fi channels
Channel 1-11 (NA)
Channel 12-13 (ROW)
Channel 14 (Japan)

Supported 5GHz Wi-Fi channels
Channels:
36,40,44,48,52,56,60,64,100,104,108,112,
116,120,124,149,153,157,161
Wi-Fi scanning to allow for best channel strength/settings

MAC Filtering
Individual Radio Client Management
Wireless Client Connection
Transmission Management
Ability to limit/exclude certain channels
Radio Transmit Power Control

Multiple SSIDs
16 SSIDs per band / 32 SSIDs total
256 simultaneous users

RADIO MODES

AP Mode
AP WDS Mode

AUTHENTICATION TYPES AND SECURITY

Multiple authentication methods
WPA(PSK), WPA2(PSK), WEP
WPA Enterprise, WPA2 Enterprise

Multiple encryption algorithms
CCMP (AES)
TKIP
CCMP and TKIP both
Hidden SSID support
Wireless client isolation
Remote Radius authentication and accounting support
Local authentication while utilizing other

AE108 Series:

AE108 - 11ac 2x2:2 Performance for standalone, integration, or open source
AE108-CMS - 11ac 2x2:2 Performance used with activeARC CMS Cloud

type of authentication (MAC passing)

WAN CONNECTIVITY MODES

DHCP
Static
PPTP
L2TP
PPPoE

LAN CONNECTIVITY MODES

DHCP Server
Configurable DHCP Lease Time
Configurable DHCP IP Pool
Static

NETWORKING

VLAN Support
Out-of-band management IP
Static Routing
End user Router Mode
SNMP support for usage statistics and equipment health
WAN ping blocking

QoS / Bandwidth Management
Client level advanced bandwidth management
Auto enabled QoS
Wireless QoS (WMM)
Packet queuing and prioritization

CAPTIVE PORTAL

SSID Binding
Automatic redirection to Splash page
Customizable landing page
Custom DNS
Built-in web-server
NAS ID support
Whitelisted Websites
WISPr attributes

Various attributes support
Standard Radius Access accept
Bandwidth up and down
Data usage
Session time out
Idle Timeout
Interim accounting updates
Disconnect message
Multiple RADIUS profiles support
Optional secondary RADIUS server and prioritization options

CLI

User friendly CLI support

USER INTERFACE

Easy access Web GUI
Multiple browser compatibility
Internet Explorer 11
Google Chrome
Mozilla Firefox
Safari
Multiple Admin login support
Admin access log

GRAPHS

Realtime Graphs
Load Graph
Traffic Graph
Wireless Graph
Active Connection Graph

ROUTES

ARP
Active IPv4-Routes

ADMINISTRATION

Setting of Router password
SSH
Telnet

FIREWALL

Firewall settings
General settings
Zones settings
Port Forwarding
Firewall Rules
Traffic Rules
Source NAT

BACKUP/UPGRADE FIRMWARE

Firmware Options
Backup/Restore firmware
Reset to defaults
Flash new firmware keeping previous configurations
Flash new firmware with factory settings
Configurable Option
Backup file list

DIAGNOSTICS

Ping
Trace route
Nslookup

CERTIFICATIONS

FCC
IC

Contact:

Phone: 844.242.9246
Email: sales@intcomcorp.com
Web: www.iccnetworking.com